

\$599,400 - 111 Pinemill Mews Ne, Calgary

MLS® #A2206806

\$599,400

6 Bedroom, 3.00 Bathroom, 1,488 sqft
Residential on 0.07 Acres

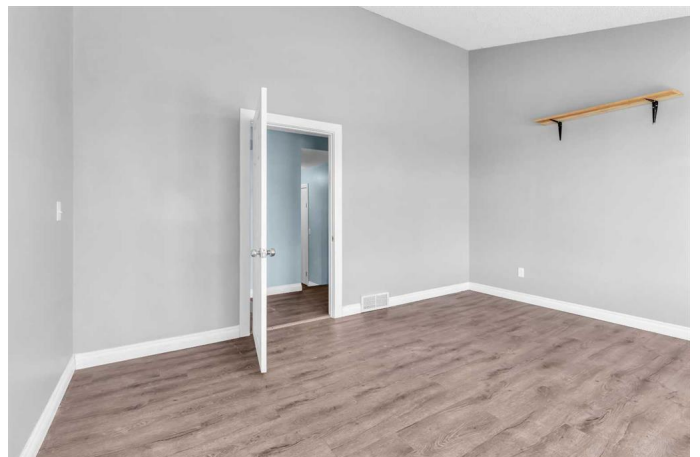
Pineridge, Calgary, Alberta

Welcome to this bright and spacious 6-bedroom, 2.5-bathroom detached home in the heart of PINERIDGE! This 2 STOREY HOME offers plenty of space for families, investors, or those looking for RENTAL INCOME.

The MAIN FLOOR features a warm and inviting LIVING ROOM, along with an additional family room complete with a cozy fireplace—perfect for relaxing or entertaining. A FUNCTIONAL KITCHEN with ample space flows into the dining area, making family meals and gatherings easy. A convenient half-bath completes this level.

Upstairs, the second floor boasts 3 SPACIOUS BEDROOMS, including a primary bedroom with a walk-in closet. This level provides plenty of comfort for a growing family. Upper floor has a spacious 4 pc bathroom. The newly finished basement (with secondary legal suite permits applied) adds fantastic RENTAL INCOME, featuring 3 additional bedrooms, an open-concept kitchen and living area, a full bathroom, and a separate entrance with its own laundry.

Outside, the home offers a huge backyard with a deck, perfect for summer BBQs and outdoor enjoyment. Situated on a corner lot with RC-G Zoning. Adding to its appeal, the home is currently rented with positive cash flow, with the (main house leased at \$2,930/month) and



the (basement leased at \$1,690/month), exclusive of utilities.

This fantastic property is ideally located near Village Square Shopping Centre, the public library, Lester B. Pearson High School, and several primary and middle schools, making it a convenient and family-friendly location. With easy access to the Trans-Canada Highway, commuting is a breeze. Whether you're looking for a spacious home, an investment property, or future development opportunities, this home has it all! Don't miss outâ€”contact us today for a private showing!

Built in 1978

Essential Information

MLS® #	A2206806
Price	\$599,400
Bedrooms	6
Bathrooms	3.00
Full Baths	2
Half Baths	1
Square Footage	1,488
Acres	0.07
Year Built	1978
Type	Residential
Sub-Type	Detached
Style	2 Storey
Status	Active

Community Information

Address	111 Pinemill Mews Ne
Subdivision	Pineridge
City	Calgary
County	Calgary
Province	Alberta
Postal Code	T1Y4R6

Amenities

Parking Spaces	5
Parking	Off Street

Interior

Interior Features	See Remarks, Separate Entrance, Storage, Vaulted Ceiling(s)
Appliances	Dishwasher, Dryer, Electric Stove, Range Hood, Refrigerator, Washer
Heating	Forced Air, Natural Gas
Cooling	Other
Fireplace	Yes
# of Fireplaces	1
Fireplaces	Wood Burning
Has Basement	Yes
Basement	Exterior Entry, Full, Suite, Walk-Up To Grade

Exterior

Exterior Features	Fire Pit, Private Entrance, Private Yard, Other
Lot Description	Back Lane, Back Yard, Corner Lot, Cul-De-Sac, Private, Rectangular Lot, See Remarks, City Lot
Roof	Asphalt Shingle
Construction	Wood Frame, Wood Siding
Foundation	Poured Concrete

Additional Information

Date Listed	March 29th, 2025
Days on Market	91
Zoning	RC-G

Listing Details

Listing Office	Century 21 Bamber Realty LTD.
----------------	-------------------------------

Data is supplied by Pillar 9â„¢ MLSÂ® System. Pillar 9â„¢ is the owner of the copyright in its MLSÂ® System. Data is deemed reliable but is not guaranteed accurate by Pillar 9â„¢. The trademarks MLSÂ®, Multiple Listing ServiceÂ® and the associated logos are owned by The Canadian Real Estate Association (CREA) and identify the quality of services provided by real estate professionals who are members of CREA. Used under license.