

# \$379,900 - 6 Westlake Glen, Strathmore

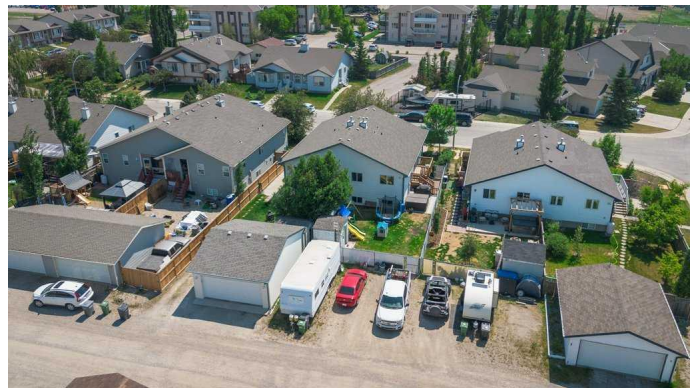
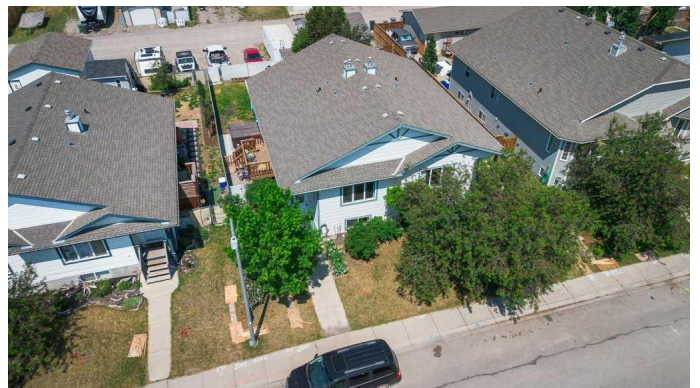
MLS® #A2229675

**\$379,900**

3 Bedroom, 2.00 Bathroom, 951 sqft  
Residential on 0.10 Acres

Westmount\_Strathmore, Strathmore, Alberta

Seller Motivated! Welcome to this inviting and move-in-ready 3-bedroom plus den, 2-bathroom fully developed half duplex, perfectly situated on a spacious lot with back alley access in a mature and convenient neighborhood steps from a park, pathways and lake. Whether you're stepping into homeownership for the first time, looking to downsize smartly, or seeking a low-maintenance investment property, this home checks all the boxes—plus some unexpected bonuses. From the moment you arrive, you'll notice the small of lilacs as you enter a large front foyer with a generous coat closet—a rare and practical feature that sets the tone for this well-planned home. Inside, you'll find fresh updates throughout, including new paint and beautiful hardwood flooring, adding warmth and character to the living spaces. The oak kitchen cabinetry, complete with pantry storage and quality appliances, offers timeless appeal and functionality for your everyday cooking and entertaining needs. Relaxation comes easy here. The main bathroom features a corner jetted tub—a cozy spot to unwind at the end of the day. With three spacious bedrooms and two full bathrooms, there's plenty of room for family life, guests, or your ideal home office setup. The lower level is fully finished, expanding your living space with additional comfort and versatility. Step outside to discover one of the home's biggest perks: the fully fenced backyard, complete with a



deck for BBQ season, a shed for extra storage, and enough room for kids, pets, or a future garden. There's even ample space to build a double detached garage if that's on your wish list—and thanks to rear alley access and RV parking, your options here are truly wide open. Comfort is key year-round with central air conditioning, and pride of ownership shines through from every angle. Located close to schools, shopping, and recreational amenities, you'll love the balance of quiet living and convenience.

Built in 2002

### Essential Information

MLS® #	A2229675
Price	\$379,900
Bedrooms	3
Bathrooms	2.00
Full Baths	2
Square Footage	951
Acres	0.10
Year Built	2002
Type	Residential
Sub-Type	Semi Detached
Style	Side by Side, Bi-Level
Status	Active

### Community Information

Address	6 Westlake Glen
Subdivision	Westmount_Strathmore
City	Strathmore
County	Wheatland County
Province	Alberta
Postal Code	T1P 1W8

### Amenities

Parking Spaces	2
Parking	Parking Pad

## Interior

Interior Features	Ceiling Fan(s), Laminate Counters, Pantry, Soaking Tub
Appliances	Dryer, Electric Stove, Freezer, Microwave Hood Fan, Refrigerator, Washer, Window Coverings
Heating	Forced Air
Cooling	Central Air
Has Basement	Yes
Basement	Finished, Full

## Exterior

Exterior Features	Private Yard
Lot Description	Back Lane, Back Yard, Front Yard
Roof	Asphalt Shingle
Construction	Vinyl Siding, Wood Frame
Foundation	Poured Concrete

## Additional Information

Date Listed	June 10th, 2025
Days on Market	16
Zoning	R2

## Listing Details

Listing Office	RE/MAX Key
----------------	------------

Data is supplied by Pillar 9â„¢ MLS® System. Pillar 9â„¢ is the owner of the copyright in its MLS® System. Data is deemed reliable but is not guaranteed accurate by Pillar 9â„¢. The trademarks MLS®, Multiple Listing Service® and the associated logos are owned by The Canadian Real Estate Association (CREA) and identify the quality of services provided by real estate professionals who are members of CREA. Used under license.